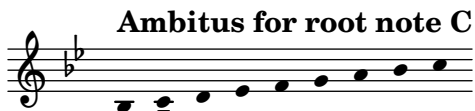


MELODY 5

Collection 2022



Nils Hilbricht

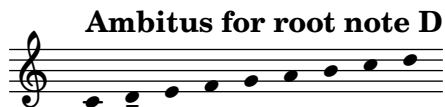


Musical score for Melody 5, consisting of six staves of music in Bb major, 3/4 or 6/8 time. The score includes measure numbers 9, 17, 25, 33, and 41. The melody features various rhythmic patterns, including eighth and sixteenth notes, and includes triplet markings.

Metrically ambivalent between 3/4 and 6/8, this piece should offer a variety of possible interpretations. It may even be suitable for a whole bar meter with only one beat.

MELODY 5

Collection 2022



Nils Hilbricht



9

17

25

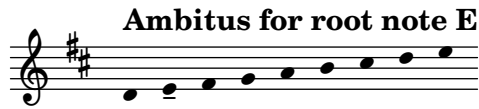
33

41

Metrically ambivalent between 3/4 and 6/8, this piece should offer a variety of possible interpretations. It may even be suitable for a whole bar meter with only one beat.

MELODY 5

Collection 2022



Nils Hilbricht



9

17

25

33

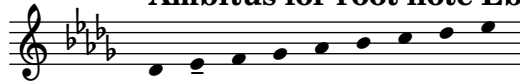
41

Metrically ambivalent between 3/4 and 6/8, this piece should offer a variety of possible interpretations. It may even be suitable for a whole bar meter with only one beat.

MELODY 5

Collection 2022

Ambitus for root note Eb



Nils Hilbricht



9

17

25

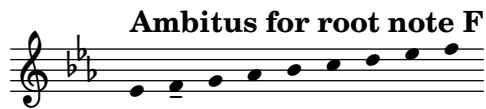
33

41

Metrically ambivalent between 3/4 and 6/8, this piece should offer a variety of possible interpretations. It may even be suitable for a whole bar meter with only one beat.

MELODY 5

Collection 2022



Nils Hilbricht



9

17

25

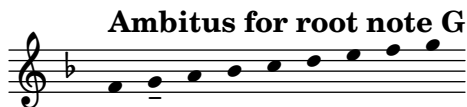
33

41

Metrically ambivalent between 3/4 and 6/8, this piece should offer a variety of possible interpretations. It may even be suitable for a whole bar meter with only one beat.

MELODY 5

Collection 2022



Nils Hilbricht



9

17

25

33

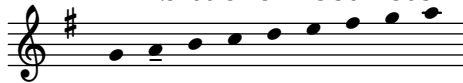
41

Metrically ambivalent between 3/4 and 6/8, this piece should offer a variety of possible interpretations. It may even be suitable for a whole bar meter with only one beat.

MELODY 5

Collection 2022

Ambitus for root note A



Nils Hilbricht

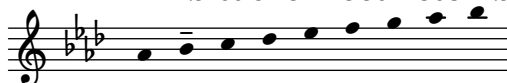
Musical score for 'MELODY 5' in treble clef, one sharp key signature, 3/4 or 6/8 time. The score consists of six staves of music. Measure numbers 9, 17, 25, 33, and 41 are indicated at the start of their respective staves. The piece features a variety of rhythmic patterns, including triplets and fermatas.

Metrically ambivalent between 3/4 and 6/8, this piece should offer a variety of possible interpretations. It may even be suitable for a whole bar meter with only one beat.

MELODY 5

Collection 2022

Ambitus for root note Bb



Nils Hilbricht



9

17

25

33

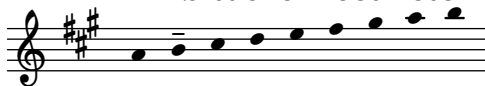
41

Metrically ambivalent between 3/4 and 6/8, this piece should offer a variety of possible interpretations. It may even be suitable for a whole bar meter with only one beat.

MELODY 5

Collection 2022

Ambitus for root note B



Nils Hilbricht

9

17

25

33

41

Metrically ambivalent between 3/4 and 6/8, this piece should offer a variety of possible interpretations. It may even be suitable for a whole bar meter with only one beat.