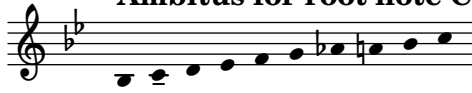


# MELODY 1

## Collection 2024

Ambitus for root note C



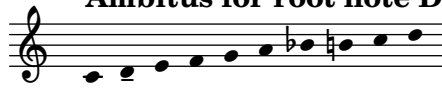
Nils Hilbricht



# MELODY 1

## Collection 2024

Ambitus for root note D



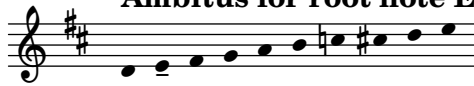
Nils Hilbricht



# MELODY 1

## Collection 2024

Ambitus for root note E



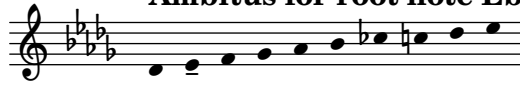
Nils Hilbricht



# MELODY 1

## Collection 2024

Ambitus for root note Eb



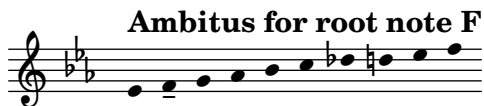
Nils Hilbricht



# MELODY 1

## Collection 2024

Ambitus for root note F



A musical staff in G major (one sharp) and 3/4 time. The notes are: F4, G4, A4, B4, C5, B4, A4, G4, F4, E4, D4, C4. This represents the range of the melody starting from the root note F.

Nils Hilbricht



First line of the melody: Treble clef, G major, 3/4 time. The notes are: F4 (quarter), G4 (quarter), A4 (quarter), B4 (quarter), C5 (quarter), B4 (quarter), A4 (quarter), G4 (quarter), F4 (quarter), E4 (quarter), D4 (quarter), C4 (quarter).

11



Second line of the melody: Treble clef, G major, 3/4 time. The notes are: A4 (quarter), B4 (quarter), C5 (quarter), B4 (quarter), A4 (quarter), G4 (quarter), F4 (quarter), E4 (quarter), D4 (quarter), C4 (quarter). This line starts at measure 11 and includes a repeat sign at the end.

22

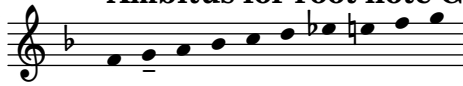


Third line of the melody: Treble clef, G major, 3/4 time. The notes are: A4 (quarter), B4 (quarter), C5 (quarter), B4 (quarter), A4 (quarter), G4 (quarter), F4 (quarter), E4 (quarter), D4 (quarter), C4 (quarter). This line starts at measure 22 and ends with a double bar line.

# MELODY 1

## Collection 2024

Ambitus for root note G



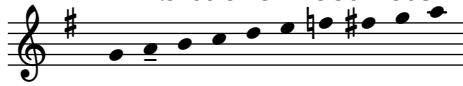
Nils Hilbricht



# MELODY 1

## Collection 2024

Ambitus for root note A



Nils Hilbricht



# MELODY 1

## Collection 2024

Ambitus for root note Bb



Nils Hilbricht





# MELODY 1

## Collection 2024

Ambitus for root note B



Nils Hilbricht

