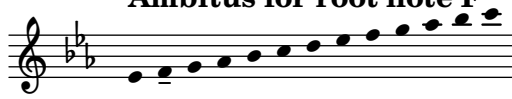


PIECE 4

Collection 2024

Ambitus for root note F



Nils Hilbricht

The main musical score for Piece 4, consisting of 12 systems of two staves each. The key signature is two flats (Bb, Eb) and the time signature is 4/4. The score is written in treble clef. The first system starts with a 4-measure rest in the first staff. The music features a variety of rhythmic patterns, including quarter notes, eighth notes, and sixteenth notes, with some triplet markings. There are repeat signs and first/second endings throughout the piece. The piece concludes with a final double bar line in the 40th measure of the 12th system.